

Asheville
DUSSELIER &
MARKS HOMES



5
BEDS

4
BATHS

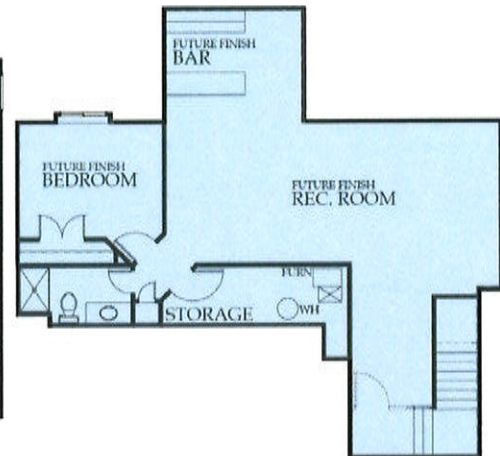
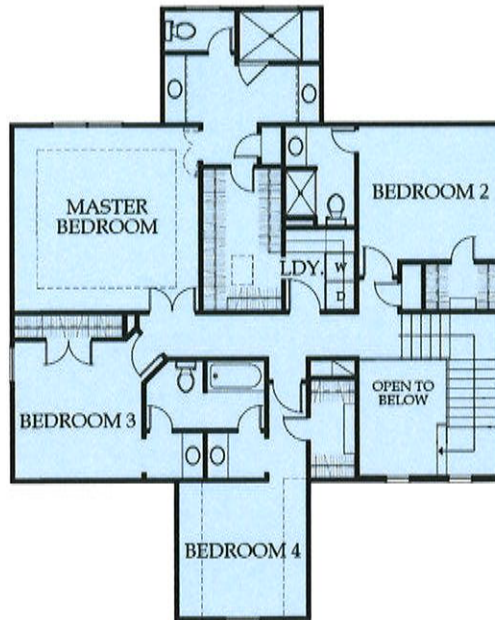
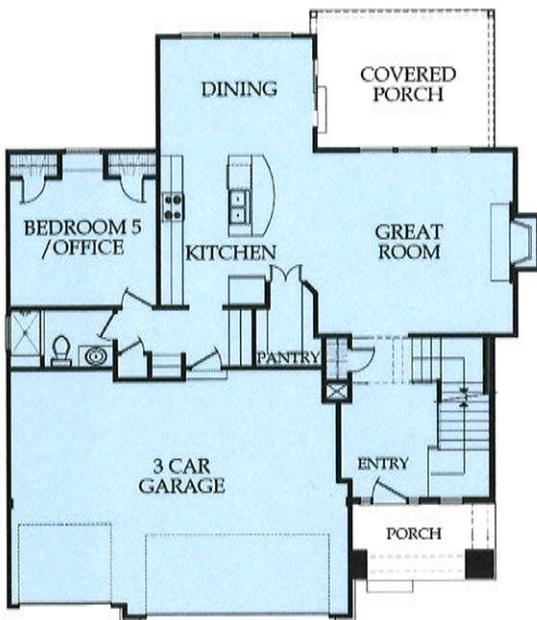
2,550
SQ FT

2 Story

Main Level
1,125 SqFt

Upper Level
1,425 SqFt

*Opt Lower Level
873 SqFt



SUSAN HEENAN
(913) 302-7329

SusanHeenan@reecenichols.com

DEBBIE ERSKINE
(913)620-0966

Derskine@reecenichols.com



ReeceNichols
REAL ESTATE

913-339-6800

BROOKWOOD
FARMS

Dusselier and Marks

Building Homes for Families with a Personal Touch

The Asheville- Brookwood Farms ***2 Story, 5 Bedrooms, 4 Baths, 2,550 square feet***

Interior

- Hardwood floors in entry, kitchen, breakfast, and back hall by garage door
- 12" tile kitchen backsplash
- First floor flex room with ¾ bath
- Custom kitchen cabinets with 42" uppers and hidden hinges
- Smooth-top range, microwave, and dishwasher
- Large walk-in pantry
- Ice maker line
- Boot bench and drop-off zone
- Laundry connects to master closet
- Tile floor in master and first floor hall bath
- Large walk-in master shower
- His and Her vanities in master bath
- Large walk-in master closet
- Spacious secondary bedrooms
- Private bath access from all bedrooms
- Oil-rubbed door knobs and hinges
- Seven cable and/or Cat5 phone outlets
- Pre-wire for garage door opener
- Wrought iron spindles with wood end caps
- ¾ bath stub in lower level for future finish
- Individual plumbing shut-offs at fixtures
- Passive radon piping

Exterior

- 3-car garage
- Stone and stucco front elevation
- Sump pump
- 12 x 14 concrete patio

Energy-Saving & Low-Maintenance Features

- Vinyl thermopane low-e glass windows
- R38 attic insulation
- Anti-air infiltration whole house wrap
- Foam and caulk insulation package
- Lennox 8096 Forced Air Gas Furnace
- Lennox 13 Seer Air Conditioner
- Whole-house humidifier
- LP Smart Trim and Smart Siding
- 30-year timberline style roof
- Pre-finished aluminum gutter and downspouts
- Direct vent fireplace with stone surround

Allowances

- | | |
|----------------------------|------------|
| • Appliances | \$1,142.00 |
| • Light fixtures | \$1,200.00 |
| • Landscape | \$1,000.00 |
| • Carpet (per square yard) | \$14.50 |
| • Tile (per foot) | \$8.75 |

****City and neighborhood requirements may change base price****

Dusselier & Marks Homes, Inc., our objective is to make you a satisfied customer. We are committed to creating a home of superior quality and responding to your individual needs. To meet our objective, **Dusselier & Marks Homes, Inc.,** provides the following services to each and every homebuyer:

- We are easily accessible and maintain open lines of communication with every homebuyer.
- We personally supervise every step of the construction process.
- We include quality materials and superior features as standard items.
- We use only experienced, quality-conscious subcontractors.
- We educate every homebuyer with a New Home Orientation Walk-Through and follow up with a Ten Step Warranty Homeowner Service Program.

Dusselier & Marks Homes, Inc. leo@dmhomes.com
www.dmhomes.com