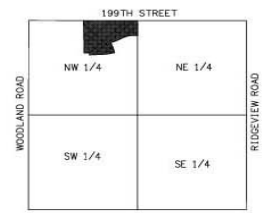
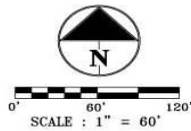
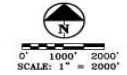


UNPLATTED

**BROOKWOOD FARMS—Phase One**



LOCATION MAP  
SECTION 12-15-23





# BROOKWOOD FARMS

## Phase One Lot Prices

Lot	Price	Feature
1	\$39,500.00	
2	Charlotte	Daylight
3	SOLD	
4	\$39,500.00	Daylight
5	\$51,000.00	Walk-Out
6	SOLD	
7	\$48,000.00	Walk-Out
8	\$48,000.00	
9	SOLD	
10	\$55,000.00	Walk-Out
11	\$51,000.00	Daylight
12	\$40,500.00	Daylight
13	\$39,500.00	Daylight
14	\$50,000.00	Daylight
15	Williamsburg	Daylight
16	SOLD	
17	SOLD	
18	SOLD	
19	\$56,000.00	Walk-Out
20	\$55,000.00	Walk-Out
21	\$52,000.00	Walk-Out
22	\$40,500.00	Daylight
23	\$37,500.00	
24	\$43,000.00	
25	SOLD	
26	SOLD	
27	\$41,000.00	
28	\$44,000.00	
29	\$44,000.00	
30	\$45,000.00	

## Phase One Lot Prices

Lot	Price	Feature
31	\$42,000.00	
32	\$48,000.00	
33	\$55,000.00	Walk-Out
34	\$58,000.00	Walk-Out
35	\$59,000.00	Walk-Out
36	\$56,000.00	Daylight
37	\$56,000.00	Daylight
38	\$56,000.00	Daylight
39	\$56,000.00	Daylight
40	\$53,000.00	
41	\$53,000.00	
42	\$53,000.00	
43	\$53,000.00	
44	SOLD	
45	\$52,000.00	Daylight
46	SOLD	
47	\$53,000.00	Walk-Out
48	\$53,000.00	Walk-Out
49	\$52,000.00	Daylight
50	\$50,000.00	Daylight
51	SOLD	
52	\$51,000.00	Daylight
53	Augusta	Walk-Out
54	SOLD	
55	SOLD	
56	\$47,000.00	Walk-Out
57	\$49,000.00	Walk-Out
58	\$39,500.00	Daylight

## PHASE ONE

VISIT US ANYTIME AT [WWW.BROOKWOODFARMS.KS.COM](http://WWW.BROOKWOODFARMS.KS.COM) / 913.686.4738

\*Topography deemed reliable but not guaranteed\* Based on 8' foundation\* Prices subject to change without notice\*